

CROWD GATE



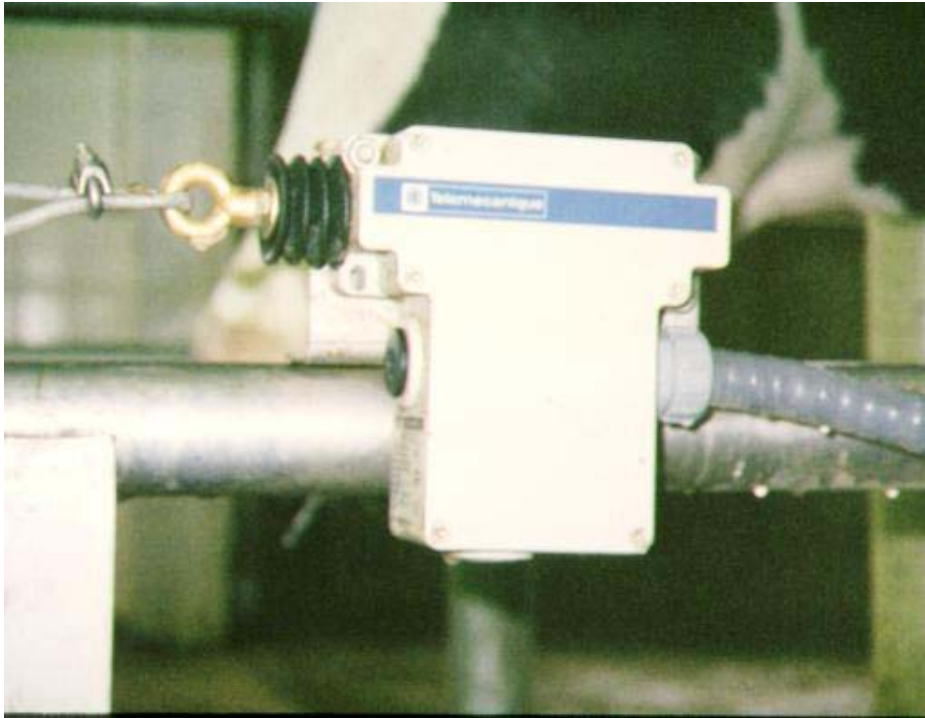
Typical crowd gate “pushes” cows in parlor!

CROWD GATE

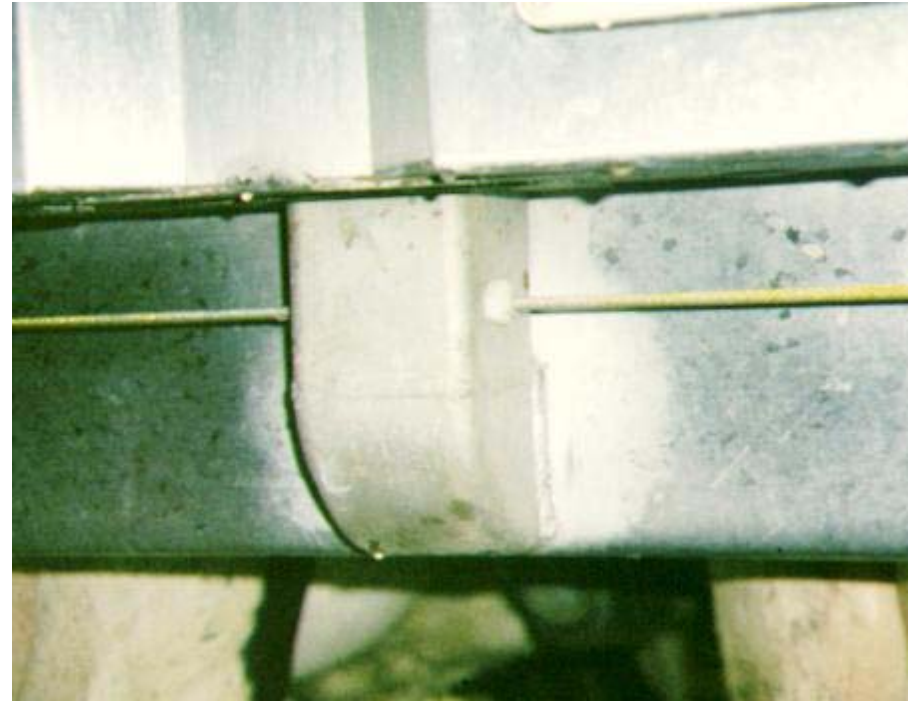


This is the way a crowd gate should work!

Crowd Gate Management



Special Cable Pull timer switch



Coated Cable in parlor

Crowd Gate Management



Total crowd gate control from any location in the parlor. Increase cow flow 10-20%. Train cows to move on bell, not the movement of the crowd gate.

Crowd Gate Management



Controlled Electricity Is Necessary

MAXIMUM PERFORMANCE CROWD GATE

Dr. Andy Johnson

Cow flow through a parlor can be improved by 10-20% if a crowd gate is properly managed. One of the major problems with cow flow is people not allowing the crowd gate to train the cows to enter the parlor but instead they chase the cows into the parlor. Cows are easily confused when one milking they are suppose to enter the parlor when the crowd gate moves and the next milking when people come out to the holding area and chases them into the parlor. If cows are properly trained by using the crowd gate, the door from the parlor pit to the holding area can be kept closed during milking.

Most crowd gate operation is very inefficient. There are usually one or two controls to operate the gate located in the parlor pit. Each time the crowd gate is to be moved, the milker has to walk to the button and work the gate. This wastes a lot of time and does not allow the milkers to stay in their milking routine. With this system, the milkers can operate the crowd gate from any location in the parlor.

The new system has proven very beneficial on both electric and air crowd gates. Very large farms as well as small farms have found the new crowd gate operating system beneficial. A coated cable is installed on both sides of the parlor and runs the full length of the parlor pit. The cable is connected to a special cable pull switch*. When the cable is pulled, only a bell or buzzer rings. If the cable is held down for over five seconds, then the gate electrifies and moves. The only time the wire is hot is when the gate moves. The cows are quickly trained to move on the bell rather than being pushed with the gate. For the animals who do not want to move, there will be a negative consequence to their action. Many dairies only have the electric fencer on two or three days a week. The crowd gate is often 10 feet behind the cows at all times rather than tight to their backside. If you are looking for some electrical expertise from a person who has done many of these, you can call Al at Carol Electric. His phone number is 920-262-1715. He has helped many others with information on installation and parts.

Some dairies will also install a special pressure switch on the gate so it will shut off if it hits the cows and they do not or cannot move forward. This also protects against an aggressive milker who tries to move the gate too far forward. This special switch is especially useful in large holding areas where the milkers cannot see the back of the parlor.

*(Square D: Telemacanique XYZCE...H7, XYZCE3A010, XYZCE4A010)

More Information: Dr. Andy Johnson
Total Herd Management Services, Inc.
W 8275 Cloverleaf Lake Road
Clintonville, Wisconsin 54929
Phone: 920-621-3604 Fax: 715-823-7880
Email: drandy@theudderdoctor.com